

Dux Automatic Spray Gun

Standard & Recirculating Fluid Supply Models

IMMEDIATE ROI

- > Reduced coating usage
- > Decreased cleanup costs
- > Faster production speed
- > Energy savings

EASY TO MOUNT

- > Mounting kits available for reciprocators and robotics
- > Lightweight and balanced
- > Reduced maintenance and repair cost on reciprocators and robotic arms
- > Circulating fluid model available
- > Choice of manual or automated fan control

AIR QUALITY COMPLIANCE

- > Drastic reductions in VOC emissions
- > Reduced HazMat clean-up and disposal
- > AQMD compliant by definition
- > Reduced booth fog and overspray

ADVANCED TECHNOLOGY

- > Laminar airflow
- > Low pressure with high velocity
- > Exceptional atomization
- > Outstanding utility across coatings and applications

INSPIRED BY FORMULA THREE RACE CAR ENGINES.

After more than five years of research and development, DUX has reinvented the spray gun from the inside out. By incorporating our patented airflow technology originally used in Formula Three race car engines, we've developed the most innovative breakthrough in spray gun technology in nearly 80 years.

THE DUX GUN PRACTICALLY PAYS FOR ITSELF AFTER JUST ONE JOB.

With the DUX Automatic spray gun, you'll have transfer efficiency improvements of 15–40% over current leading spray technologies, including HVLP. In fact, the coatings savings are so significant your DUX spray gun often pays for itself in the first month of use.

The DUX Automatic spray gun uses a patented technology to reduce overspray and booth "fog." The result is less paint in the air and more paint on the target. This decreases booth filter fouling and hazardous waste disposal fees and can potentially cut the operating cost of a paint line by 50%. Its precision application reduces the need for masking and containment, while decreasing labor time, preparation, and clean up costs.

EXCEPTIONAL QUALITY

DUX's superior atomization technology enhances finish quality, delivering a better product for your customers and increasing your competitive advantage.

TECHNOLOGY THAT'S EASY TO USE AND EASY ON YOU.

With its short air passages and lightweight body, the DUX Automatic spray gun is compact and easy to mount. Unlike other Automatic spray guns, its weight is centered and balanced. These design features reduce the wear and component fatigue caused by unbalanced heavy spray guns. Finally, due to our patented airflow efficiency, the DUX spray guns show huge reductions in paint booth fog and overspray. This means less material settles onto your equipment, making cleanup easier and extending the life of your mechanical parts. The way we see it, clearer air isn't just a regulatory mandate. It's good for business.

HIGHLY CONTROLLED AIR FLOW

See for yourself. Compare the DUX spray gun to any other spray equipment on the market. You'll find that most competing technologies incorporate angular twists and turns within the air passage and long travel distance between the air inlet and air cap. These features create severe air turbulence. Bottom line — it's hard to control and shape air at the air cap when it's out of control inside the gun. With the DUX spray gun, you'll never have that problem. It is designed with smooth sweeping air passages, fewer obstructions, and shorter distance between the inlet and air cap. The result is minimal air pressure loss through the spray gun and extremely organized and controllable air flow.

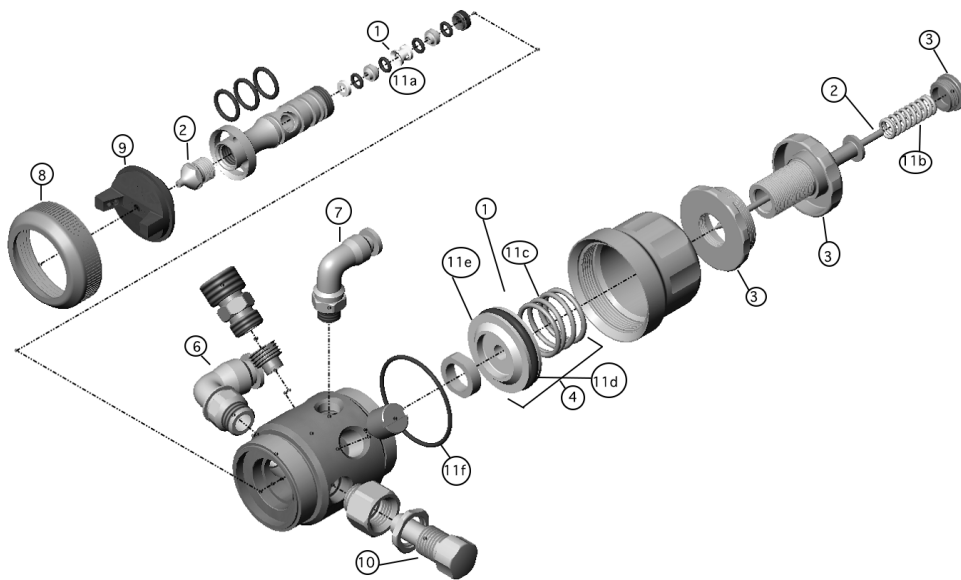
DUX AUTOMATIC SPRAY GUN WITH STANDARD OR CIRCULATING FLUID SUPPLY AND EITHER AUTOMATIC OR MANUAL FAN CONTROL

DUX AUTOMATIC CONFIGURATIONS

FLUID SUPPLY	Standard or Circulating
FAN CONTROL	Automatic/Manual

DUX AUTOMATIC SPECIFICATIONS

BODY MATERIAL	Anodized Aluminum
FLUID PASSAGE MATERIAL	Stainless Steel
AVAILABLE AIR CAPS	A0: Low Solids A1: General Purpose A2: High Solids
GUN WEIGHT*	Standard Fluid Supply: 1.1 lbs. Circulating Fluid Supply: 1.2lbs
MAXIMUM ATOMIZING AIR INLET PRESSURE**	A0 Air Cap: 10psi A1 Air Cap: 10 psi A2 Air Cap: 10.1 psi
MAXIMUM FLUID INLET PRESSURE	75 psi
REQUIRED TRIGGERING AIR PRESSURE	35 psi
FAN CONTROL PRESSURE	2-20psi
MAXIMUM AVAILABLE FAN PATTERN (AT 9" SPRAY DISTANCE)	2-20 psi
AIR CONSUMPTION	A0 Air Cap: 9.1 scfm A1 Air Cap: 9.6 scfm A2 Air Cap: 11.0 scfm



No.	Part	Description	No.	Part	Description
1.	310129	Fluid Needle Packing Kit	11.	310172	Wearable Parts Replacement Kit
2.	310325	SC Tip/Needle Set (.6mm)			Includes:
	310326	SC Tip/Needle Set (.8mm)	11a		(1) fluid needle packing kit
	310327	SC Tip/Needle Set (1.0mm)	11b		(1) needle spring
	310328	SC Tip/Needle Set (1.2mm)	11c		(1) trigger spring
	310329	SC Tip/Needle Set (1.4mm)	11d		(1) trigger piston o-ring-30mm
	310330	SC Tip/Needle Set (1.6mm)	11e		(1) trigger housing o-ring-36mm
	310331	SC Tip/Needle Set (1.8mm)	11f		(1) trigger housing
	310332	SC Tip/Needle Set (2.0mm)			
	310333	SC Tip/Needle Set (2.2mm)			
3.	310115	Fluid Control Assembly			
4.	310134	Trigger Kit			
5.	310167	Mounting Bolt Kit			
6.	410326	3/8" Push to Connect Swivel Fitting			
7.	410325	1/4" Push to Connect Swivel Fitting			
8.	310157	Air Cap Ring			
9.	410465	Air Cap, A0, Stainless Steel			
	410466	Air Cap, A1, Stainless Steel			
	410467	Air Cap, A2, Stainless Steel			
10.	310112	Fan Control Valve w/locking ring			

Accessories

310201	PTFE MagnaLube (.75oz)
310472	PTFE Magbelube 10PK (.75oz)
310175	Exterior Cleaning Brush
310176	Fluid Tube Cleaning Brush
310223	Air Cap Tester, A0, Stainless Steel
310233	Air Cap Tester, A1, Stainless Steel
310235	Air Cap Tester, A2, Stainless Steel

Tools

310174	Dux 10mm Fluid Tip Driver
310173	Dux Packing Tool
410606	Dux Multi-Tool Wrench
410522	Packing Driver
310310	Packing Pressure Gauge

Notes:

*W/o Mounting Hardware

**When operated to maintain HVLP compliance (10 psi or less at the air cap)

***When the atomizing air supplied to the DUX Automatic gun is on, atomizing air will constantly flow through the gun and out the air cap independent of triggering

DUX Automatic AIR/FLUID FITTINGS

ATOMIZING AIR INLET	Quick Disconnect/Push Lock Swivel Fitting for 3/8"
TRIGGERING AIR INLET	Quick Disconnect/Push Lock Swivel Fitting for 1/4"
FLUID INLET/OUTLET	Quick Disconnect/Push Lock Swivel Fitting for 3/8"
FAN CONTROL INLET (AUTO FAN MODEL ONLY)	Quick Disconnect/Push Lock Swivel Fitting for 3/8"

