



## Dux Gravity Feed Spray Gun

3M PPS / PPS V. 2.0 Adaptor & Aluminum Hard Cup Available

### INSPIRED BY FORMULA THREE RACE CAR ENGINES.

After more than 5 years of research and development, DUX has reinvented the spray gun from the inside out. By incorporating our patented airflow technology, originally used in Formula Three race car engines, we've developed the most innovative breakthrough in spray gun technology in nearly 80 years.

For the first time, finishers can spray nearly any type of fluid, onto nearly any surface with a single gun — while reducing coatings usage and improving finish quality.

### IT PRACTICALLY PAYS FOR ITSELF AFTER JUST ONE JOB.

The DUX gun is lighter, more ergonomic, and easier to use than any other spray gun in its class, with transfer efficiency improvements over HVLP and conventional guns routinely reaching 15–40% over those existing spray technologies. In fact, the coatings savings are so significant, the gun often pays for itself in the first month of use. The spray gun uses DUX's patented technology to reduce paint and filter usage, hazardous waste disposal fees, and air consumption, thereby potentially cutting the operating cost of a paint line by half. Its precision application reduces the need for masking and containment, decreasing labor time as well as preparation and clean up costs. You'll also spend less on personal protective equipment, booth maintenance, and energy.

What's more, DUX's superior atomization technology enhances finish quality, thereby increasing your competitive advantage — while delivering a better product for your customers.

### TECHNOLOGY THAT'S EASY TO USE AND EASY ON US.

Most gravity feed spray guns incorporate bulky, front-heavy body designs that are made even heavier by the addition of heavy fluid cups. With the DUX Gravity Feed's short air passages, the body of the gun is more compact which makes it lighter, more ergonomic, and much easier to use. A center mounted fluid cup also helps balance the gun, leading to reduced arm and wrist fatigue. Finally, lower operating pressures result in massive reductions in unhealthy paint booth fog and overspray, drastically improving the work environment for everyone involved. The way we see it, clearer air isn't just a regulatory mandate. It's the responsible thing to do.

#### IMMEDIATE ROI

- > Reduced coating usage
- > Decreased cleanup costs
- > Faster production times
- > Energy savings

#### EASY TO USE

- > Ergonomic design
- > Lightweight and balanced
- > Reduced booth fog and overspray

#### AIR QUALITY COMPLIANCE

- > Drastic reductions in VOC emissions
- > Reduced HazMat clean-up & disposal
- > AQMD compliant by definition

#### ADVANCED TECHNOLOGY

- > Laminar airflow
- > Low pressure with high velocity
- > Exceptional atomization
- > Outstanding utility across coatings and applications

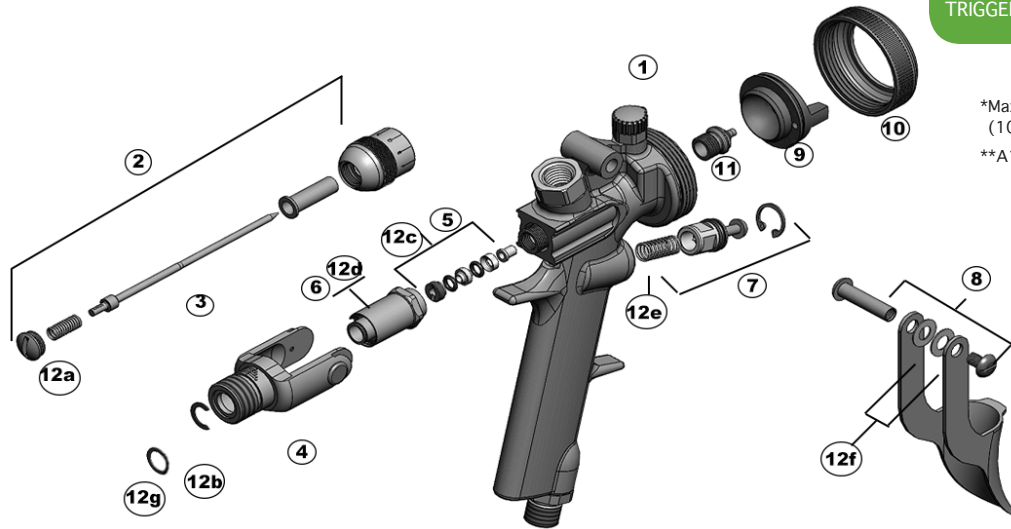
## THE DESIGN ISN'T IT'S ONLY STUNNING FEATURE.

See for yourself. Compare the DUX spray gun to any other spray equipment on the market. You'll find that most competing technologies incorporate angular twists and turns within the air passage, along with long travel distance between the air inlet and air cap. As a result, longer distances and more restrictive air passages create friction and severe air turbulence. Bottom line — it's hard to control and shape air at the air cap when it's out of control inside the gun.

With the DUX spray gun, you'll never have that problem. It is designed with smooth sweeping air passages, fewer obstructions, and shorter distance between the inlet and air cap. The result is minimal air pressure loss through the spray gun and extremely organized and controllable airflow.

## SPECIFICATIONS

BODY MATERIAL	Investment Cast Aluminum
FLUID PASSAGE MATERIAL	Stainless Steel
AIR CAP MATERIAL	Anodized
WEIGHT (w/o Cup)	13.6 oz.
MAXIMUM ATOMIZING INLET AIR PRESSURE*	A0 Air Cap: 10.5psig A1 Air Cap: 10.7psig A2 Air Cap: 11.0psig
AIR INLET	1/4" NPS Male
FLUID CUP FITTING	M12 x 1.5 3/8" NPS Female
AIR CONSUMPTION	A0 Air Cap: 8.9 scgm A1 Air Cap: 10.2 scfm
TRIGGER PRESSURE	39.8 oz.



\*Maximum inlet pressure to maintain HVLP compliance (10 psi or less at the air cap)

\*\*A1 cap recommended, A2 cap also available

No.	Part	Description
1.	310110	Fan Control Assembly
2.	310116	Fluid Needle Assembly
3.	310117	Fluid Needle
4.	310125	Yoke
5.	310128	Fluid Needle Packing Kit
6.	310126	Yoke Spring Assembly
7.	310159	Trigger Air Valve Kit
8.	310131	Trigger Kit
9.	410507	Air Cap, A0 (PTFE)
	410508	Air Cap, A1 (PTFE)
	410509	Air Cap, A2 (PTFE)
	410465	Air Cap, A0 (SS)
	410466	Air Cap, A1 (SS)
	410467	Air Cap, A2 (SS)
10.	310157	Air Cap Ring

No.	Part	Description
11.	310237	Fluid Tip 0.4mm
	310250	Fluid Tip 0.6mm
	310251	Fluid Tip 0.8mm
	310252	Fluid Tip 1.0mm
	310253	Fluid Tip 1.2mm
	310254	Fluid Tip 1.4mm
	310255	Fluid Tip 1.6mm
	310256	Fluid Tip 1.8mm
	310257	Fluid Tip 2.0mm
	310258	Fluid Tip 2.2mm
12.	310171	Wearable Parts Kit Including:
	a.	(1) Needle Spring
	b.	(1) Trigger Air Valve C-Clip
	c.	(1) Needle Packing Kit
	d.	(1) Yoke Spring Assembly
	e.	(1) Trigger Spring
	f.	(2) Washers
	g.	(1) Fluid Control O-Ring

## ACCESSORIES

310260	600ml DUX Aluminium Cup
310259	1 Liter DUX Aluminium Cup
310305	PPS Adaptor #5
310306	PPS 2.0 Adaptor #5s
310201	PTFE MagnaLube (.75oz)
310471	PTFE MagnaLube 10PK (.75oz)
310175	Exterior Cleaning Brush
310176	Fluid Tube Cleaning Brush
310231	Air Cap Tester, A0
310230	Air Cap Tester, A1
310232	Air Cap Tester, A2

## Tools

310174	Dux 10mm Fluid Tip Driver
310173	Dux Packing Tool
410606	Dux Multi-Tool Wrench
410522	Packing Driver
310310	Packing Pressure Gauge

